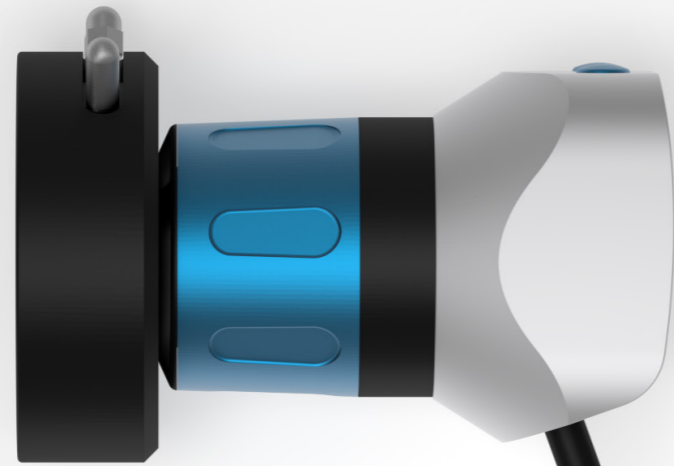


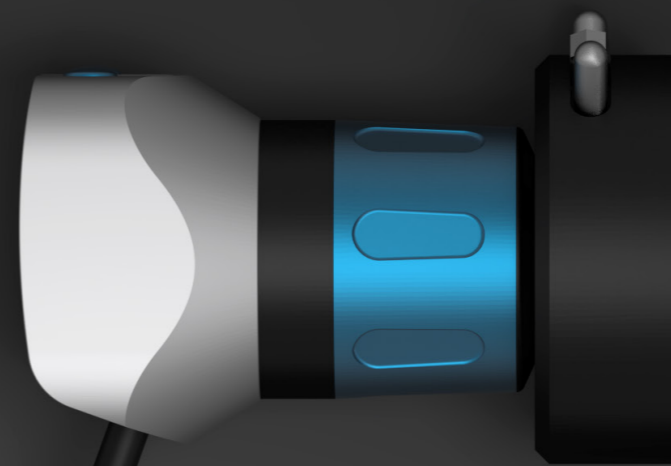


Smart, not just in the cart.
Rethinking proven solutions.



A camera. As unique as you are.

High-resolution sensor, waterproof aluminum housing, innovative user control. To put it simply: impressive image quality packaged in an extraordinary design and customized for you.



It brings light into the dark.

The integrated LED lighting always puts the light where you need it. And it is always as bright as necessary for your perfect image. Without any auxiliary light sources or fiber optic cables.



MCAMHD^c
HD camera with C-mount thread.



MCAMHD
HD camera with integrated
HD endo coupler.



MCAMHD+
HD camera with integrated HD
endo coupler and integrated light source.



MCAMHD+^c
HD camera with C-mount thread
and integrated light source.

Perfect down to the last detail.

The prerequisite for brilliant image results is precise coordination of all components. Even the best cameras do not produce good images if they have ordinary optics. That is why we offer the **M-CAM HD** not only with a C-mount, but also with an integrated HD endo coupler. We have succeeded in capturing reality with the sensor – precisely and without distortion. The result: a brilliant image with astonishing details down to the last of the 5 million image pixels.

Rugged yet sophisticated.

In the **M-CAM HD** we have not simply packed camera electronics into a housing. No, we have embedded highly advanced technology in a rugged and attractive aluminum sheath.

In the process, we have by no means neglected the aspects of perfect handling or ease of operation. These are reflected in the very short and optimally balanced design.

As a result, the **M-CAM HD** fits comfortably in the user's hand and is convenient to use.

Flawless design. Ideal handling. Perfect for you.

HD ENDO COUPLER

Top image quality and easy handling are seamlessly integrated. Thanks to HD glass optics with sapphire glass, $f=22.5$.



HAPTIC FEEDBACK

Feel – the new dimension in camera operation.



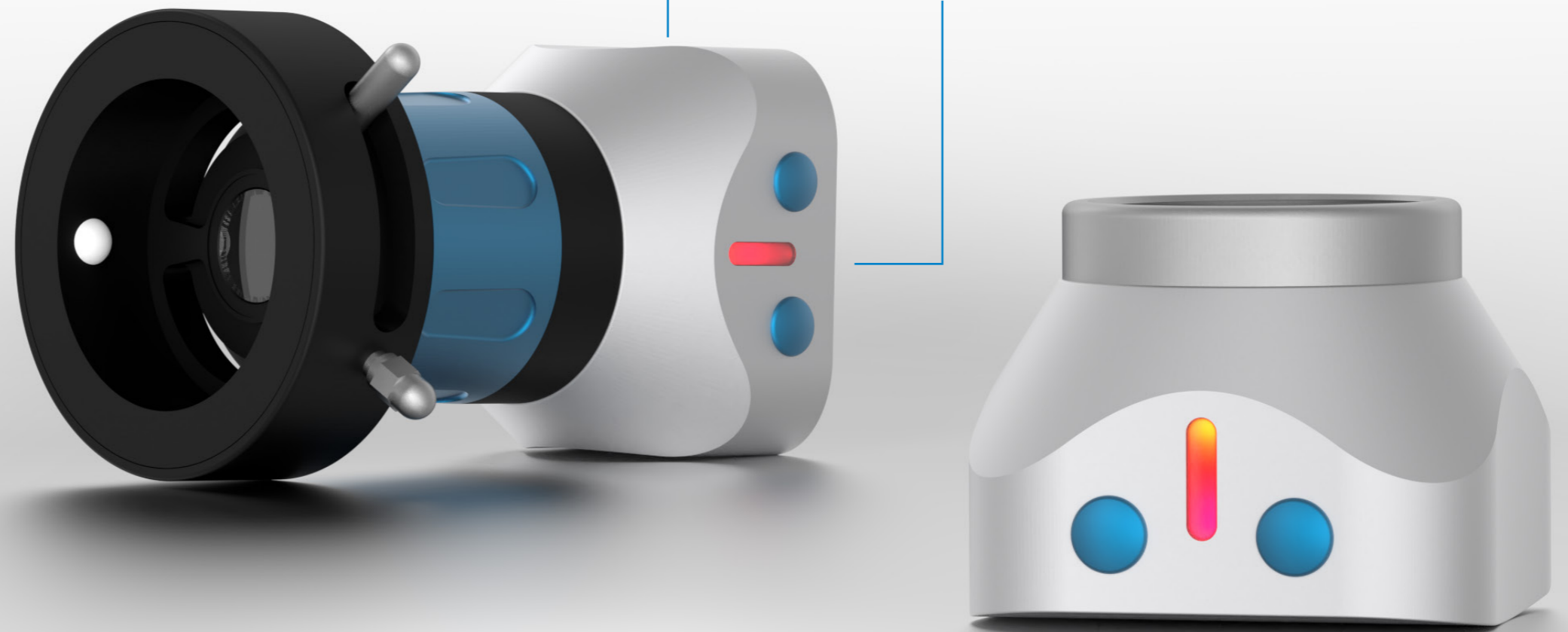
USER-INTERFACE

Everything is under control with two user-configurable buttons. The RGB status indicator gives feedback at a glance.

Open to new ideas. But sealed watertight.

In today's products, performance can be continually improved with new device software. To ensure that you can continue to benefit from improvements and new functions even after your purchase, the **M-CAM HD** has an online update function. This means that the product can be updated with a single click at any time – just as easy as its operation.

In our opinion, such ease of operation should extend to preparation. To keep this step as easy as possible, we have designed the **M-CAM HD** to be waterproof. It can be immersed in a disinfectant solution without any concerns.



That's how lighting is done today. Once activated, it's always perfect.

SHOT
High-resolution still images for the best details.

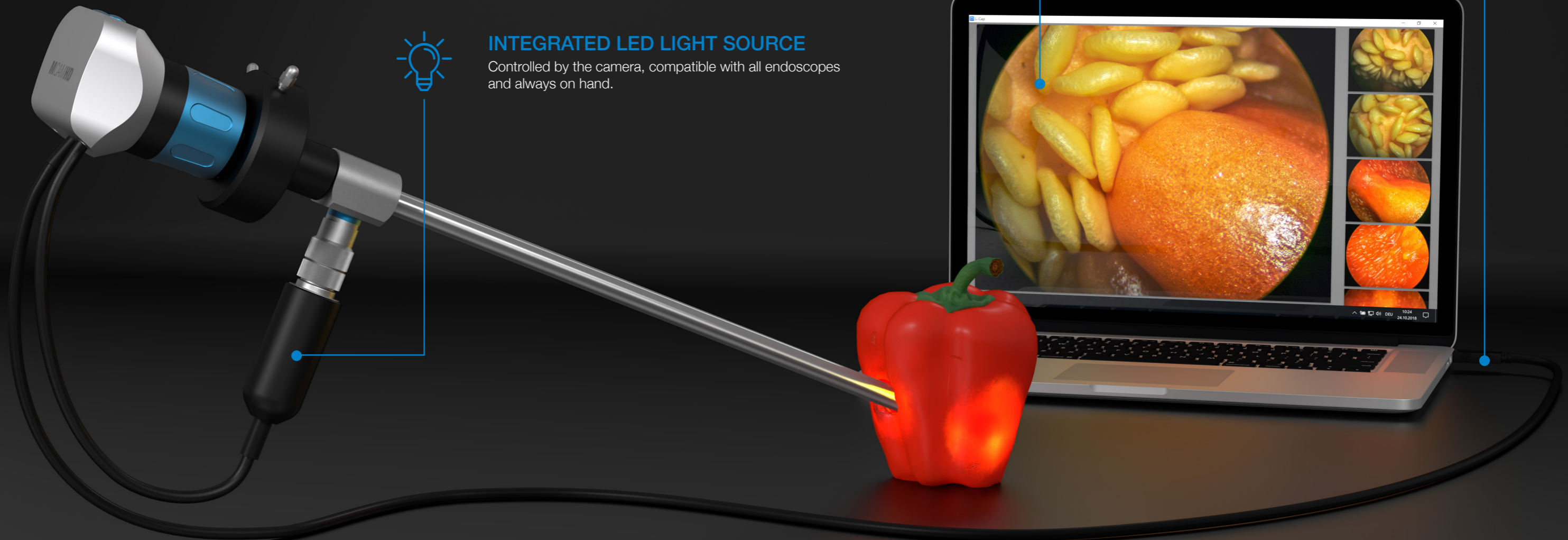


PLUG & PLAY
Driverless UVC technology and USB 2.0 make integration an easy feat



INTEGRATED LED LIGHT SOURCE

Controlled by the camera, compatible with all endoscopes and always on hand.



Simple yet ingenious.

Sometimes it is the details that make a good system an exceptional system. For the **M-CAM HD+**, this detail is the integrated endoscope lighting. We have combined the existing LED light source directly with the camera, which makes the **M-CAM HD+** an exceptional system. You do not need any external control unit or fiber optic cables, because our camera performs all of these tasks for you. And we have

gone one step further and synchronized the endoscope lighting with the lighting control of the **M-CAM HD+**. This means that the LED light source gets exactly the amount of energy that it needs to deliver a perfect image. The endoscope lighting of today – just the press of a button away.

Integration has never been this easy.

Tedious driver installations are now a thing of the past. Integration is remarkably simple thanks to UVC technology and a standard USB connection. UVC technology enables use of the **M-CAM HD** without driver installation.

USB 2.0 eliminates the need for specific interfaces or an external power supply. One cable, no driver. That is our understanding of integration.

3, 2, 1, ZERO! The smart entry.

MCAMHD^{ZERO}



Features

Resolution	HD 720p
Sensor	HD Global Shutter
Control	Innovative TAP-control
Device status	Haptic feedback and On-screen overlay
Connection	USB 2.0 or higher
Disinfection	IP 68 - 24-hour immersion
ON / OFF	Motion detection
Update	Online Update

Technical Data

Weight	110 g
Dimensions	106mm Ø 25mm
Housing	Aluminium - stainless steel
Zuleitung	Pluggable USB cable with metal connector 2m / 3m / 5m
Operating system	Windows - macOS
Driver	UVC standard technology

Equipped with the most important basic functions, the **M-CAM HD ZERO** offers a smart entry into the world of digital endoscopy.

Thanks to global shutter technology, innovative TAP control and haptic feedback, it ensures uncomplicated use on the patient in every situation.

MCAMHD

High-Definition Medical Camera

Manufactured & Designed
in Germany

Im Sägenloh 8
78333 Stockach

Fon +49 (0) 7771 - 914 628-80

info@icl-s.com
www.iclercher-solutions.com

680030-1